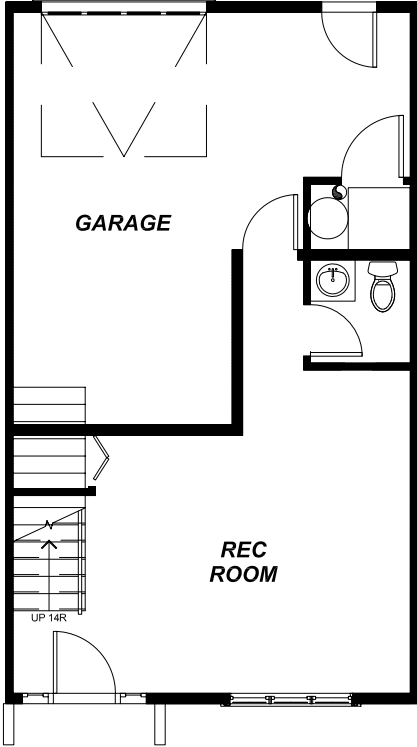
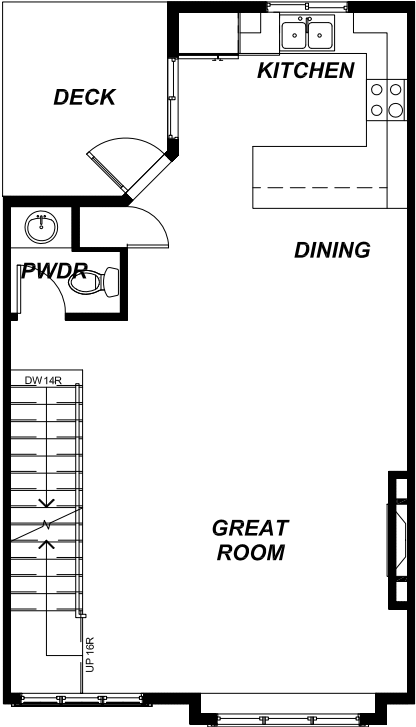


**A**  
**3 BEDROOMS**  
**2 BATHROOMS**  
**2 HALF BATHS**  
**1637 SQUARE FT.**

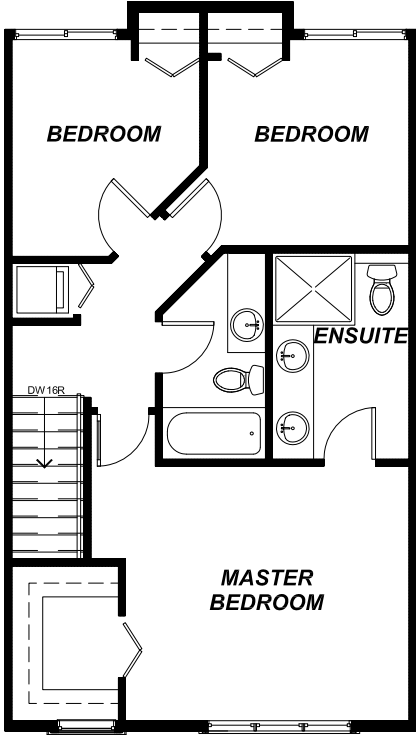
**THE GRAND**  
**ON GRAND**



**LOWER FLOOR PLAN** 364 sf  
**GARAGE** 312 sf



**MAIN FLOOR PLAN** 605 sf



**UPPER FLOOR PLAN** 668 sf

In our continuing effort to maintain and improve upon the high standard of The Grand on Grand, the developer reserves the right to modify or change plans, specifications, features, and prices without notice. Materials may be substituted with equivalent or better at the developer's sole discretion. Illustrations, renderings, and marketing materials provided are an artist's concept only, are intended as a general reference, and are subject to change without prior notice. Please see architectural drawings for dimensions and layouts. Please refer to disclosure statement for specific offering details. E. & O. E.